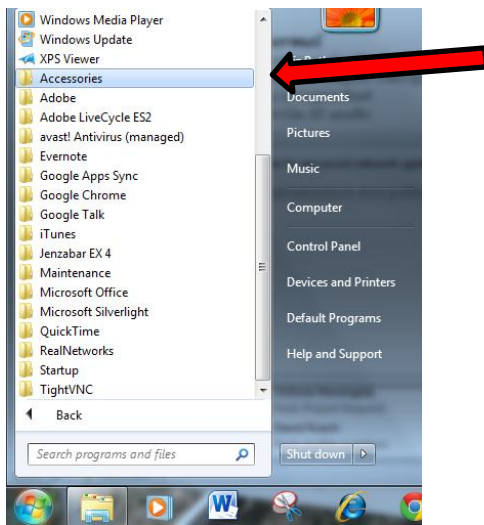
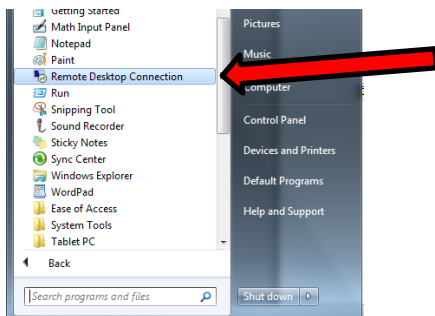


How to Login to Hanani

1. Go to **Start, Accessories**



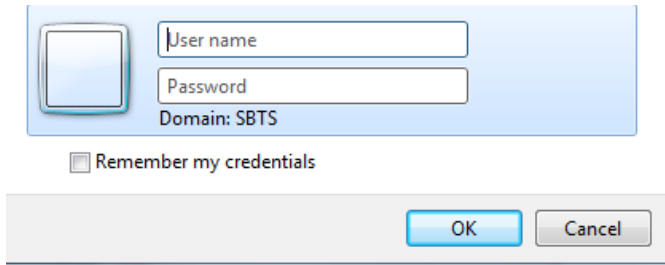
2. Find and click on **Remote Desktop Connection**



3. In the Computer field, type **hanani.sbts.edu** and click **Connect**



4. Type in your credentials (SBTS\username)



A Windows login dialog box with a light blue header. It contains two text input fields: "User name" and "Password". Below the "Password" field, it says "Domain: SBTS". There is a checkbox labeled "Remember my credentials" which is currently unchecked. At the bottom right, there are two buttons: "OK" and "Cancel".

**Please note, the first time you connect you will need to add your fileshare folder(s) to your desktop.*

5. When you are finished, please be sure to **Log off**

